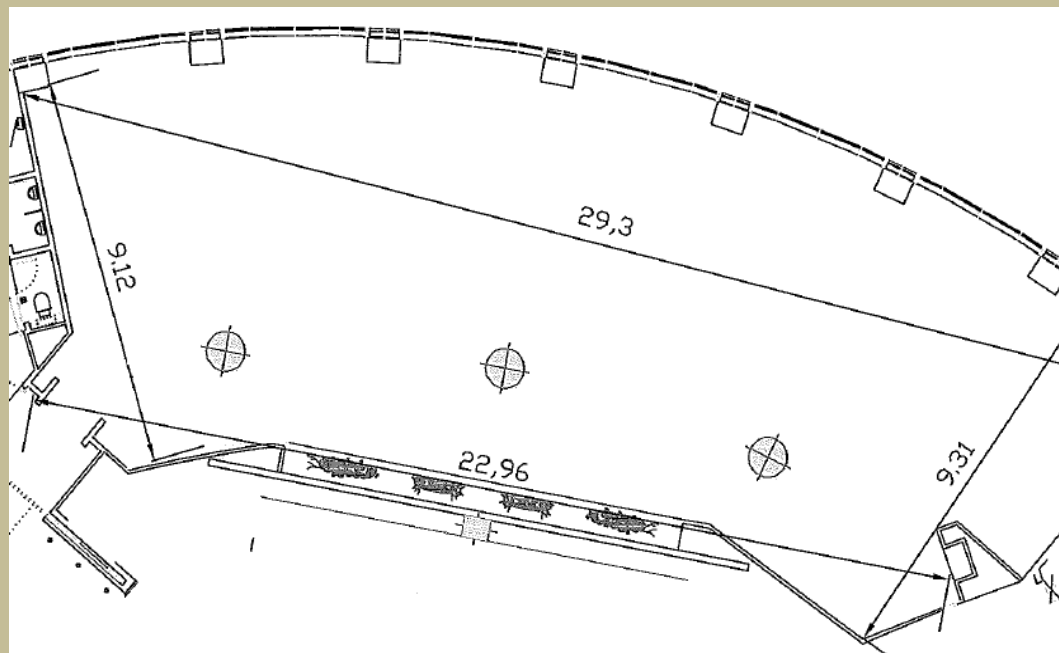




Salón Panorámico

Regarded as one of the most exclusive venues in Madrid, every year the hotel organizes countless celebrations at this space. The most exclusive scenic room located on the 30th floor of the building, where up to 200 guests can enjoy a first-rate celebration as they gaze upon the spectacular views the room offers over Madrid.



Room Dimensions

L x W

29,30m x 9,31m

Area

Sq Meters

298

Ceiling Height

Max 6,57m

Min 2,78m

Door Dimensions

H x W

2,13m x 1,34m

Floor Level

30th

Natural Lighting

Yes



Banquet Style

170



Buffet Style

130



Cocktail Style

200